

CFAES



Supporting Employees through
Program Development
Reinventing How We Work in a
Post-pandemic World



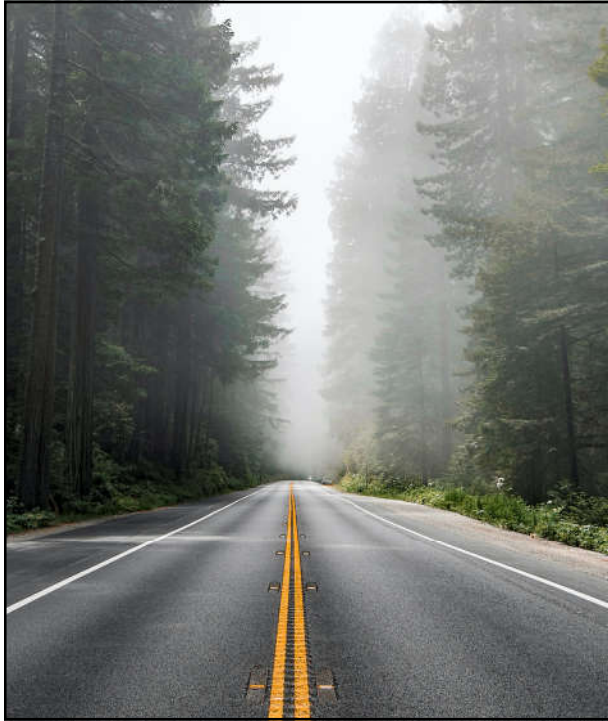
THE OHIO STATE UNIVERSITY
COLLEGE OF FOOD, AGRICULTURAL,
AND ENVIRONMENTAL SCIENCES

OHIO STATE UNIVERSITY EXTENSION
Learning and Organizational Development

1

Empathy drives successful engagement.

2



Roadmap

Skills Development

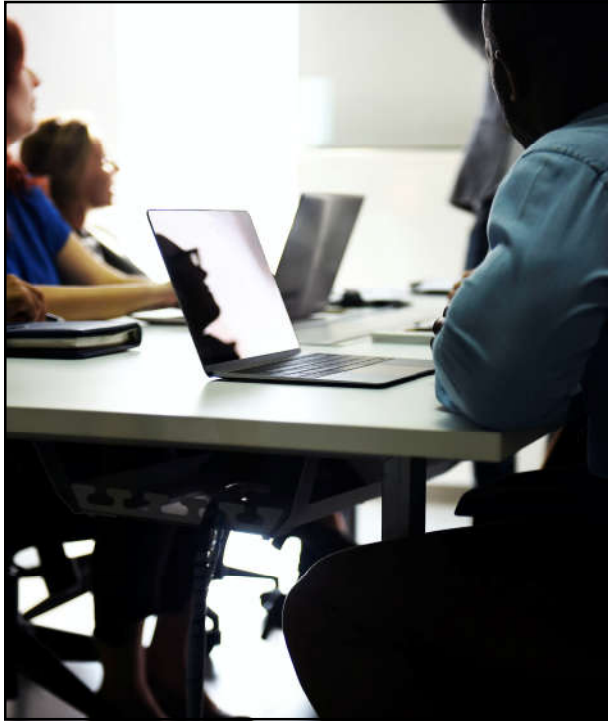
Program Design

Evaluation

3

Skills Development

4



What We Did

Pre-pandemic

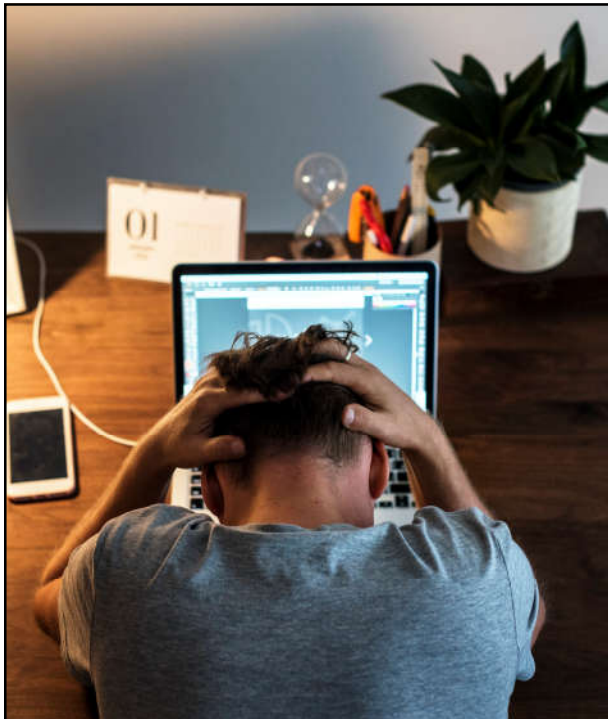
Hands-on workshops

During pandemic

Synchronous daily trainings

Relationship-based support requests

5



What We Learned

This approach was not sustainable nor scalable, particularly during COVID when rapid scaling of skills development was needed

6



What We're Doing Now

Creating and curating on-demand learning library and content strategy

7

Learning and Organizational Development
Ohio State University Extension

THE OHIO STATE UNIVERSITY
COLLEGE OF FOOD, AGRICULTURAL,
AND ENVIRONMENTAL SCIENCES

CFAES Home About LOD Career Development Organizational Development Program Development Learn Blog FAQ OSU Extension

DEVELOP
Program and product development strategies are key to creating impactful Extension learning opportunities for clientele.
[READ MORE](#)

Develop

Connect With Us

Request a EET | Design a Program | Request a Program Exemption | Read Our Blog | Learn Something New

Policies and Procedures | Tools and Technologies | Planning for Accessibility | Office of Diversity, Equity, and Inclusion | University Social Media Policy

The Extension Learning and Organizational Development (LOD) unit provides resources, education, coaching and guidance, and support across three primary areas of Extension: Career Development, Organizational Development, and Program Development.

Our work focuses on supporting Extension professionals and their personal career goals, the organization and its capacity for growth and success, and our internal and external audiences and how we can best meet their needs with the programs and services we offer.

We invite you to explore the resources available on our website, blog, and YouTube Channel.

Recent Posts
Hello World
Tue, 06/23/2020

Supporting the Change

Creating content hub to find information

Communication strategy

Lean on existing infrastructure from vendors for university-approved tools

8

Program Design

9



What We Did

Emphasized face-to-face engagement within community

Trained on Logic Model

10

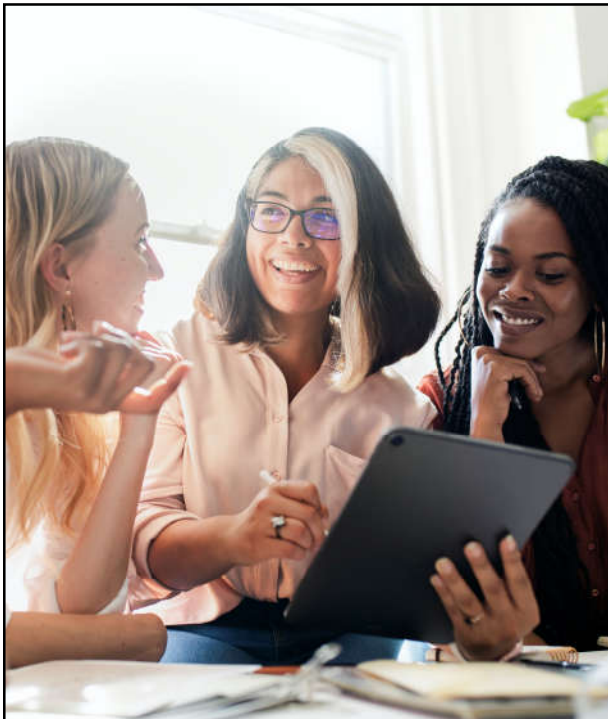


What We Learned

Digital engagement is an important part of community education

Program staff were not prepared for designing effective digital or hybrid engagement strategies

11



What We're Doing Now

Training staff on new empathy-focused program design model that encourages strategic hybrid engagement strategies

12

LIFE Framework

13



14



Supporting the Change

Digital skills development

Digital accessibility

Data security

1:1 device ratio

Evaluation and reporting

15

Program Evaluation

16



What We Did

Paper-based evaluations

Report generation by LOD

De-centralized system for most program evaluations

Some statewide programs with existing evaluations

17

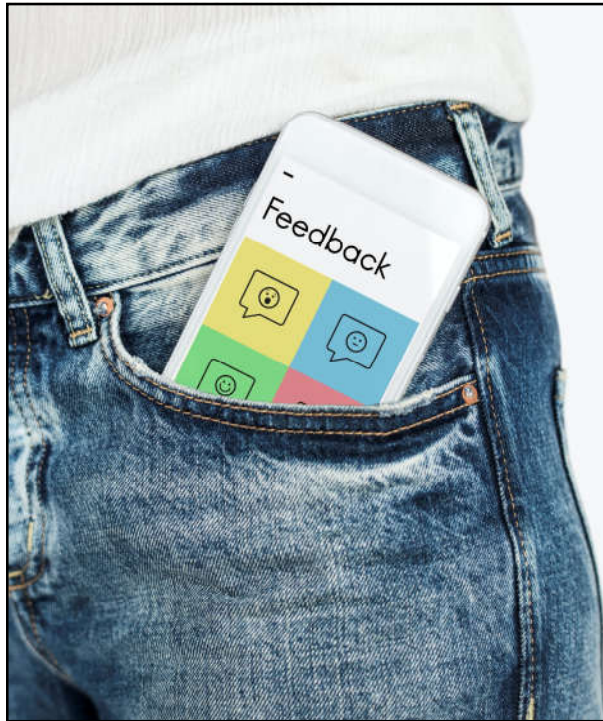


What We Learned

We were under-prepared for effective evaluations of virtual programming

Needed a better way to aggregate data across the state

18



What We're Doing Now

Offering customized, digital evaluations for programs

Creating evaluation plans that are primarily online even for in-person programming

Encouraging educators to use online evaluation system whenever possible

19




Supporting the Change

New online evaluation **Choose And Request (CART)** system

Dashboard for instructors to generate teaching evaluation summary

Dashboard for program leaders to generate reports on impact

20

<p>CFAES OHIO STATE UNIVERSITY EXTENSION</p> <p>Welcome to your OSU Extension Virtual Evaluation Shopping Cart!</p> <p>Please fill in the event title and date and then select your county, primary program area, and the OSU Extension priority area(s).</p>  <p>Then, choose the questions that you would like to ask your session attendees. That's all it takes!</p> <p>You will receive an email once your order is placed confirming your selections and containing the link to your evaluation survey and further instructions.</p> <p>For more information about the CART system, please visit the job aide located at this link http://go.osu.edu/OSUE_CARTInstructions</p> <p><small>Ohio State University Extension would like to recognize the work of the University of Georgia Extension (specifically Dr. Alexa Lamm, Associate Professor) in the testing and development of some of the questions contained in this system. For further information, please see the article, "Measuring the Aggregated Public Value of Extension." in the <i>Journal of Extension</i> (joe.org).</small></p>	<h2>CART System</h2> <p>Enter basic information in the order form</p> <p>Automated mail is sent with instructions</p> <p>Basic information ties in to second survey for participant to complete.</p>
---	--

21

<h2 style="text-align: center;">LOD Team Contact Information</h2> <p>Brian Butler butler.143@osu.edu</p> <p>Amy Kohmetscher kohmetscher.1@osu.edu</p> <p>Debby Lewis lewis.205@osu.edu</p> <p>T McCoy mccoy.860@osu.edu</p> <p>Jared Morrison morrison.332@osu.edu</p> <p>Danae Wolfe (departing Extension end of July)</p>

22